



NOA

THINGS ARE NOT ALWAYS WHAT THEY SEEM...

PAULINE
ZOE

WWW.PAULINEZOE.COM



“ THIS SHOW IS A
MESSAGE FOR OUR
SPIRIT, FOR OUR EGO.”

“ THANK YOU FOR THE
SHOW. IT CHANGED
SOMETHING INSIDE ME.”

“ THERE WAS A
BEFORE AND AN
AFTER.”

NOA

PAULINE ZOÉ



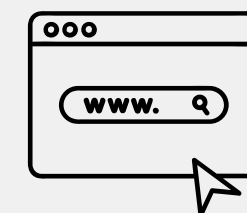
THINGS ARE NOT ALWAYS WHAT THEY SEEM...



PAULINE IS A BELGIAN ARTIST BASED IN BRAZIL AND BARCELONA, WORKING ACROSS MULTIPLE DISCIPLINES WITH A FOCUS ON CONTEMPORARY CIRCUS AND PHYSICAL THEATRE. HER ARTISTIC RESEARCH EXPLORES THE POETRY OF MOVEMENT AND THE INTIMATE RELATIONSHIP BETWEEN THE BODY, THE SCENIC OBJECT, AND SPACE, CREATING PERFORMANCES THAT ARE SENSORY AND REFLECTIVE EXPERIENCES."

PAULINE ZOÉ

@pauline_zoe_circo

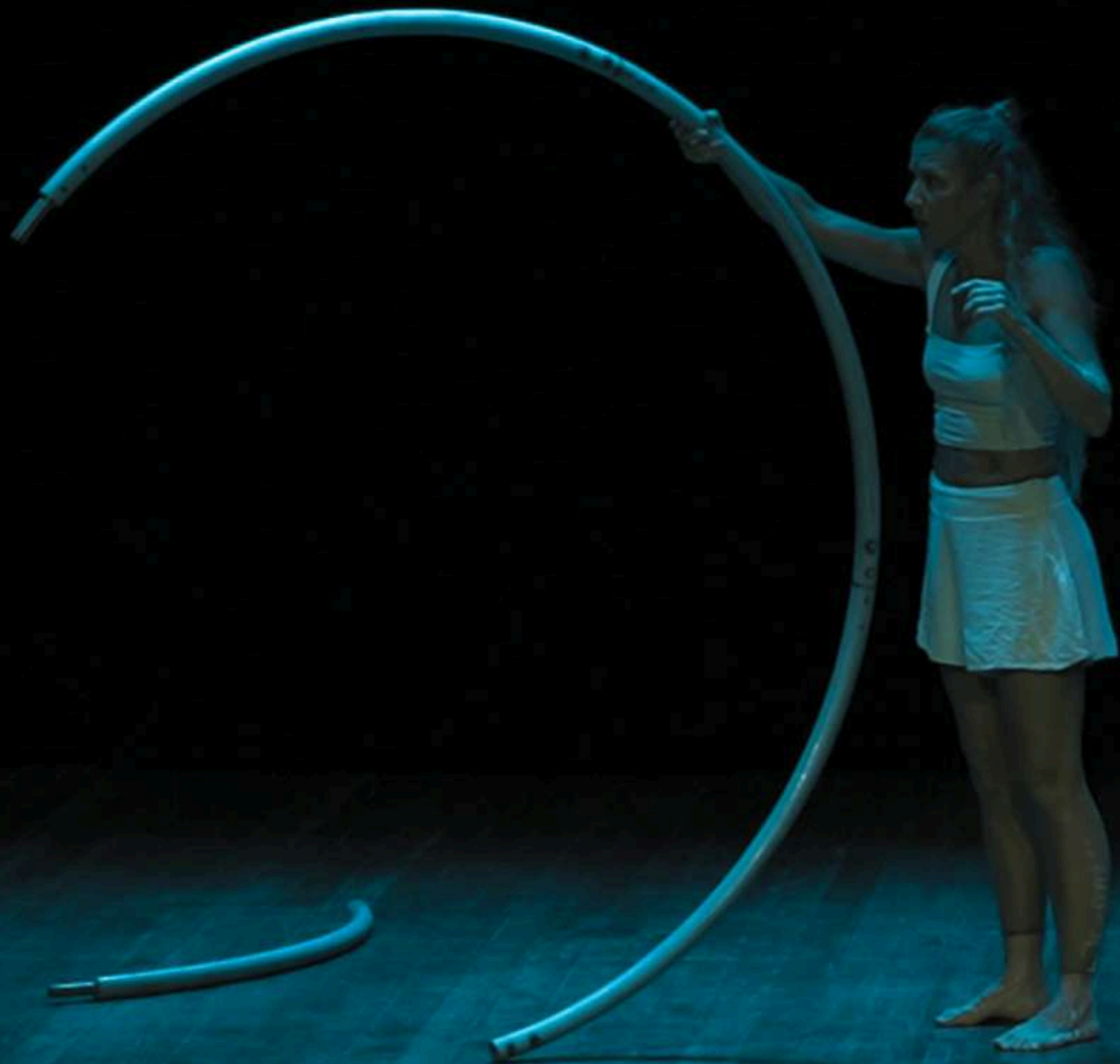


IN “NOA”, PAULINE LEADS THE AUDIENCE ON A VISCERAL JOURNEY THROUGH THE CYCLES OF LIFE, BLENDING CIRCUS, DANCE, AND PHYSICAL THEATRE. USING HULA HOOPS AND A CYR WHEEL, THE ARTIST TRANSFORMS SCENIC OBJECTS INTO METAPHORS OF CONSTRUCTION AND DECONSTRUCTION, SHOWING HOW BIG DREAMS ARE BUILT FROM MANY PIECES AND REQUIRE OTHER HANDS TO BE COMPLETED.

THE PERFORMANCE CELEBRATES THE COURAGE TO BEGIN AGAIN, PORTRAYING LIFE AS A WHEEL THAT ALWAYS RETURNS TO ITS STARTING POINT—BUT WITH NEW EYES. BETWEEN SOLITARY MOVEMENTS AND THE TRANSFORMATIVE STRENGTH OF COMMUNITY, “NOA” REVEALS THE WISDOM OF UNDERSTANDING THAT EVERY ENDING IS MERELY THE CURVE TOWARD A NEW BEGINNING.



SYNOPSIS



"LIFE IS A CONSTRUCTION.
PIECE BY PIECE,
GESTURE BY GESTURE,
WE FIT TOGETHER WHAT WE'VE BEEN GIVEN.

SOMETIMES, A PIECE IS MISSING.
OTHER TIMES, THERE'S TOO MUCH.
AND BETWEEN THESE LACKS AND
EXCESSES,
WE FIND BALANCE...
OR WE TRY TO.

EACH PIECE HAS ITS STORY.
EACH CURVE, A MEMORY.
AND TOGETHER, THEY FORM SOMETHING
GREATER."

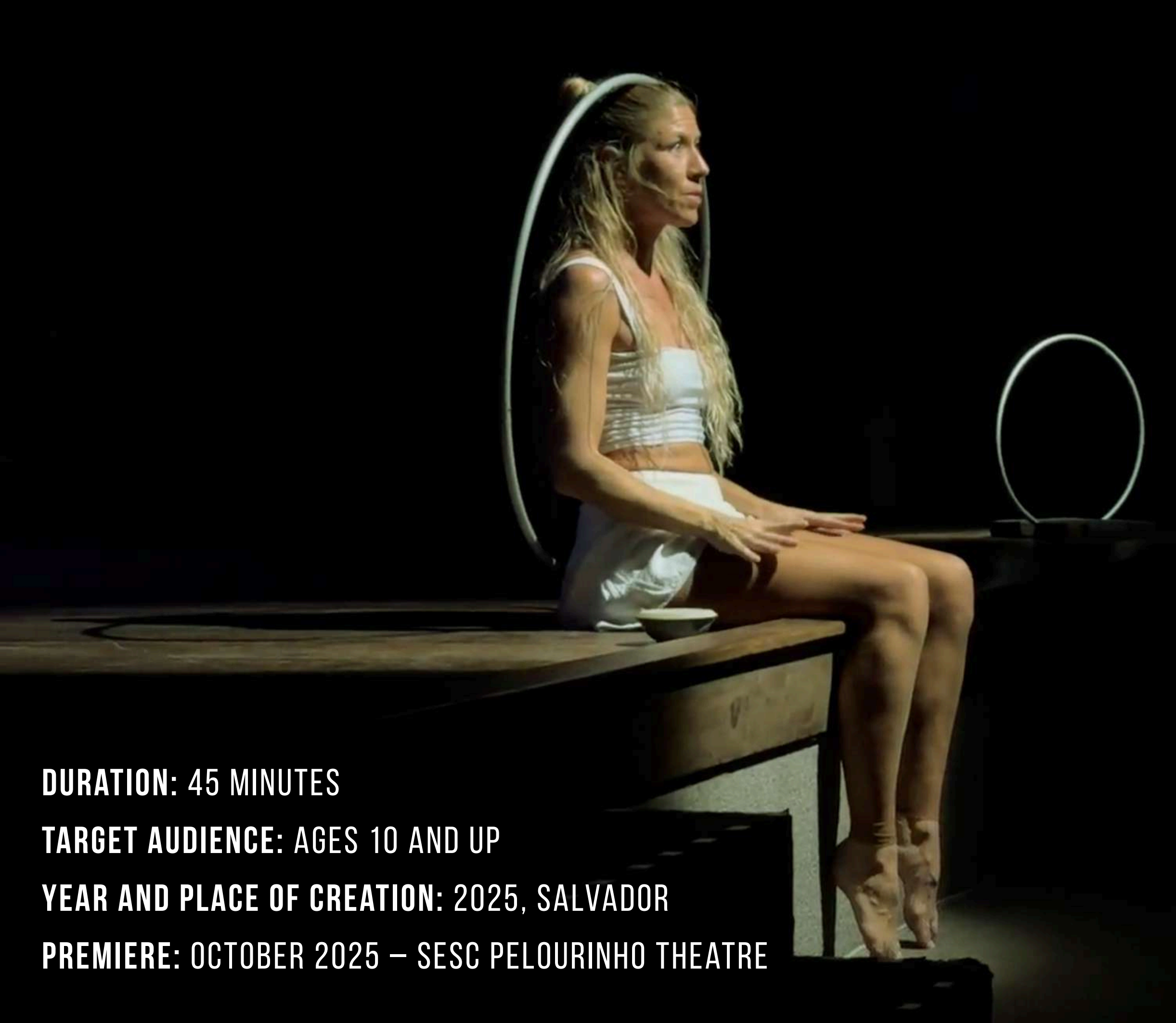
VIDEOS

▶ TEASER

▶ FULL VIDEO



CREDITS



DURATION: 45 MINUTES

TARGET AUDIENCE: AGES 10 AND UP

YEAR AND PLACE OF CREATION: 2025, SALVADOR

PREMIERE: OCTOBER 2025 – SESC PELOURINHO THEATRE

CONCEPT & PERFORMANCE: PAULINE ZOÉ

DRAMATURGY & DIRECTION: PAULINE ZOÉ

VOCAL COACH: DANILO MATA

LIGHTING BRAZIL: GIULIANA ANDRADE

LIGHTING EUROPE: CÉLINE GALIN

PRODUCTION: NÚCLEO DE CIRCO

SOUND TECHNICIAN: SAULO PAQUELET

LOGISTICS:

- NUMBER OF PEOPLE TRAVELING: 1 IF IT'S FOR OUTDOOR VENUES, AND 2 IF IT'S IN A THEATER (1 LIGHTING TECHNICIAN)
- FOR EUROPE: TRAVEL FROM BARCELONA (PAULINE ZOÉ) AND FROM MARSEILLE – LIGHTING TECHNICIAN)
- LUGGAGE: 1 SUITCASE (23KG) – STANDARD SIZE

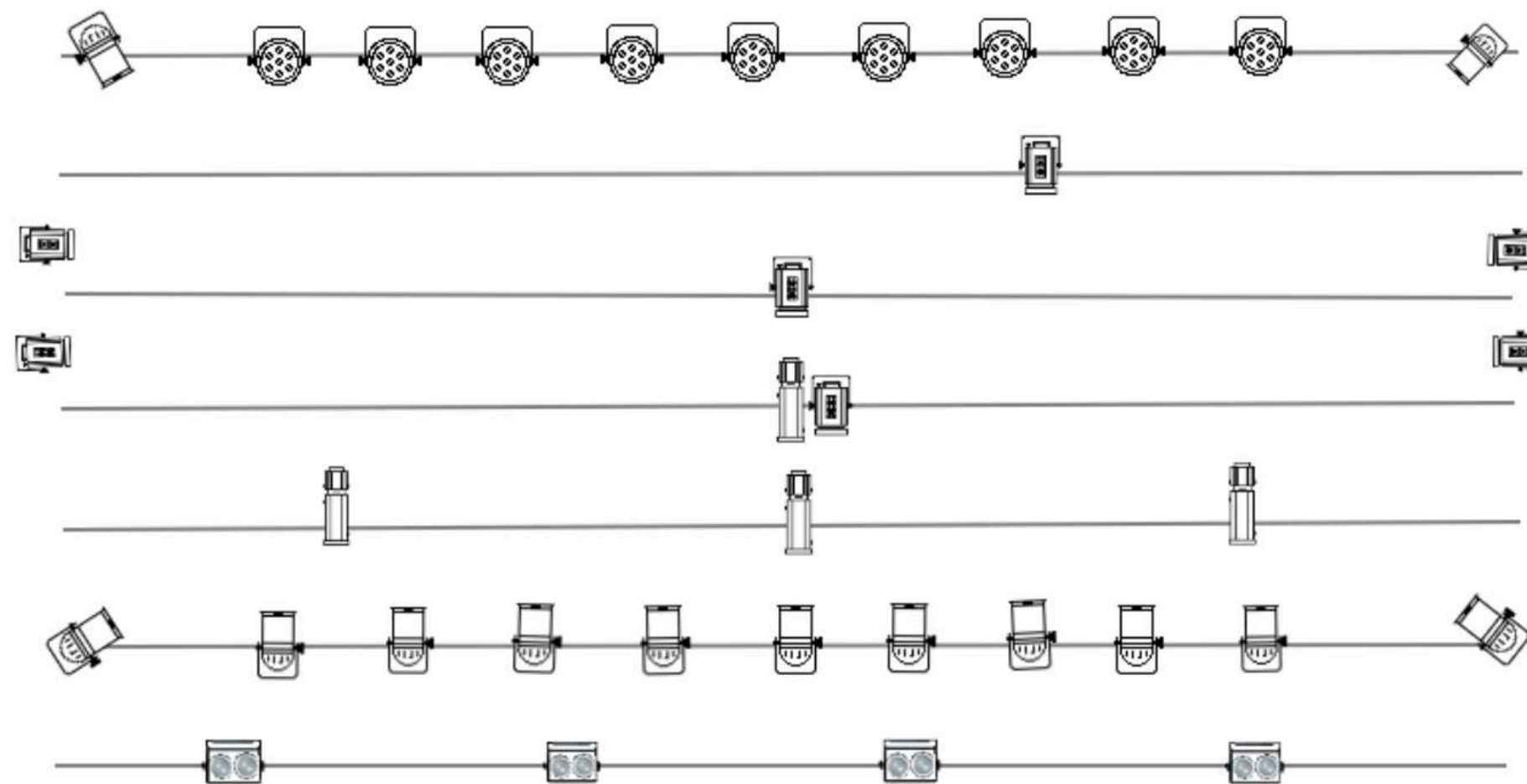
TECHNICAL REQUIREMENTS:

- MINIMUM DIMENSIONS: 8X8 METERS
- FLOOR: SMOOTH, FLAT, AND DRY (E.G., PLAZA, WOOD, SMOOTH COURT, STAGE)
- SOUND SYSTEM: PA SYSTEM SUITABLE FOR THE SPACE AND A 3.5MM (P2) INPUT



LIGHTING PLOT

Mapa de Luz Espetáculo de Circo "NOA"



SIMBOLOGIA



Foco Fresnel



Foco Elipsoidal



Foco Par 64



Foco Par LED



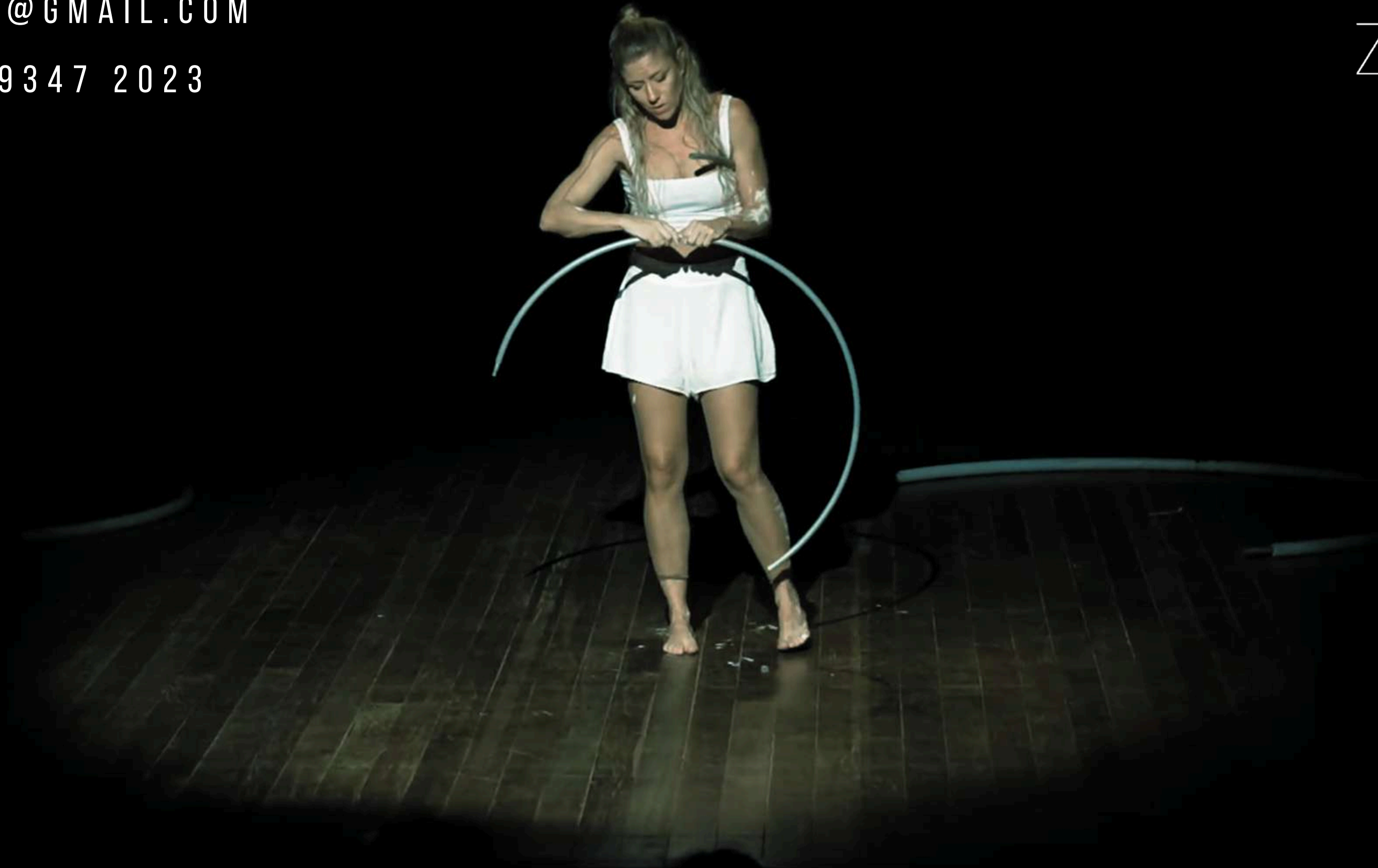
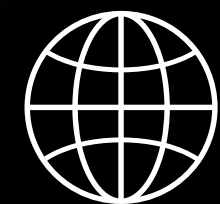
Foco Mini Brut

WWW.PAULINEZOE.COM

#PAULINE_ZOE_CIRCO

ZOECIRCO@GMAIL.COM

+55 71 99347 2023



WORKSHOPS

1. CYR WHEEL WORKSHOP (BEGINNER AND ADVANCED LEVELS)

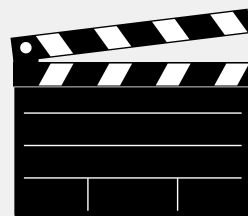
A WORKSHOP ADAPTED FOR ALL SKILL LEVELS, FROM INTRODUCTORY BASICS TO ADVANCED CYR WHEEL TECHNIQUE REFINEMENT.

2. INTRODUCTION TO HOOP DANCE

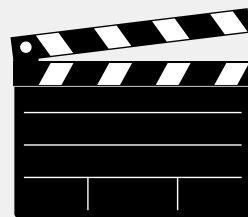
DESIGNED FOR ADULTS WITH NO PRIOR EXPERIENCE, THIS WORKSHOP COVERS THE FUNDAMENTALS OF MOVEMENT, TRICKS, AND CONNECTING WITH ONE OR MULTIPLE HOOPS.

3. ADVANCED HOOP WORKSHOP

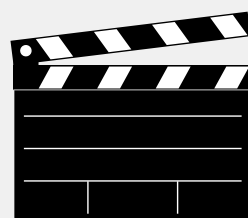
DEEPEN YOUR HOOP ARTISTRY. THIS WORKSHOP IS DESIGNED FOR THOSE WITH PRIOR EXPERIENCE AND FOCUSES ON COMPLEX TECHNIQUES SUCH AS MANDALA POSES, OFF-BODY BALANCES, AND INTEGRATING ACROBATICS WITH THE HOOP.



SESC - CYR WHEEL
WORKSHOP



VIDEO OFICINA DE RODA CYR
BELO HORIZONTE



OFICINA
"CIRCO PARA TODOS"





OTHERS SHOWS